



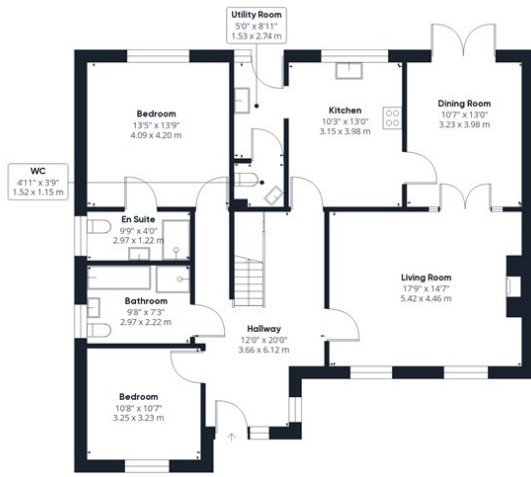
All Saints Court, Croxton, IP24 1BF Offers In Excess Of £500,000

Are you searching for a four bedroom detached property in the sought after and popular village of Croxton? This chalet style bungalow has an abundance of potential and could make the ideal family / multigenerational living home!

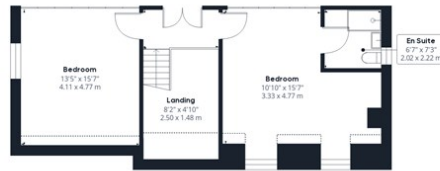
- POPULAR AND SOUGHT AFTER VILLAGE LOCATION
- IDEAL FOR MULTIGENERATIONAL FAMILIES
- ABUNDANCE OF POTENTIAL
- CARPORT AND GARAGE WITH OFF-ROAD PARKING
- OIL CENTRAL HEATING
- FOUR BEDROOM DETACHED HOUSE
- VERSATILE ACCOMMODATION
- FULLY ENCLOSED REAR GARDEN
- TWO EN SUITES
- OFFERED ON A 'CHAIN FREE' BASIS



Council Tax Band: E - EPC Rating: C 75



Ground Floor



Floor 1

Approximate total area⁽¹⁾

1760.87 ft²

163.59 m²

Reduced headroom

47.79 ft²

4.44 m²

(1) Excluding balconies and terraces

Reduced headroom

..... Below 5 ft/1.5 m

While every attempt has been made to ensure accuracy, all measurements are approximate, not to scale. This floor plan is for illustrative purposes only.

Calculations are based on RICS IPMS 3C standard.

GIRAFFE 360

